

Euro Series - Open Polycarbonate, Polysulfone Mice, Rat Cages & Trolleys

Orchid's Animal Cages are designed to facilitate animal welfare, meet research requirements and minimise the experimental variations. However, while selecting the cage, guidelines for laboratory animal facilities by concerned government organization regarding the minimum space requirements for housing of laboratory animals must be followed. As caging equipment is one of the most important factors in the physical and social environment of the experimental animal, Orchid has developed the largest range of cages meeting current norms and guidelines.

FEATURES:

- Wide range of animal house products for different animal species
- Durable and autoclavable (steam)
- Practicality of use
- Ergonomics

MICE CAGES (EURO MODEL)

A. Polycarbonate Mice Cage (EMC01):

Overall Size: 373x190x138 mm (L X B X H)

Floor Space: 500cm²

CE Certified



BODY

- Autoclavable at 121° C temperature and pressure 15 LB/ Sq inch for 15 minutes
- Fully transparent body
- Food Grade quality material Polycarbonate material
- Uniform thickness of 2.5mm±0.5mm
- Excellent stackability for ease of handling and storage



**Designed To Facilitate
Animal Welfare, Meet
Research Requirements
And Minimise The
Experimental Variations**

SS TOP GRILL-

- Made of S.S. 304 material with duly spot welded and finished joints
- AISI 304 quality stainless steel material
- Provision for fixing water bottle
- Provision for Feed Pallets
- Fitted with two hooks of brass material for locking the grill to the top of the body of cage
- Fitted with tag holder
- Designed to ensure perfect fit and locking throughout the complete cage body
- Grill are designed such as to fit in second grill for ease of stacking with foldable
- Partition for food and water bottle compartment (Accessories Supplied: PC tray & SS Grill)

B. Polycarbonate Mice Cage - High Temperature (EMHC- 01):

Overall Size: 373x190x138 mm (L X B X H)

Floor Space: 500cm²

CE Certified



BODY

- Autoclavable at 121° C temperature and pressure 15 LB/ Sq inch for 15 minutes
- Fully transparent body
- Food Grade quality material Polycarbonate material
- Uniform thickness of 2.5mm±0.5mm
- Excellent stackability for ease of handling and storage

SS TOP GRILL

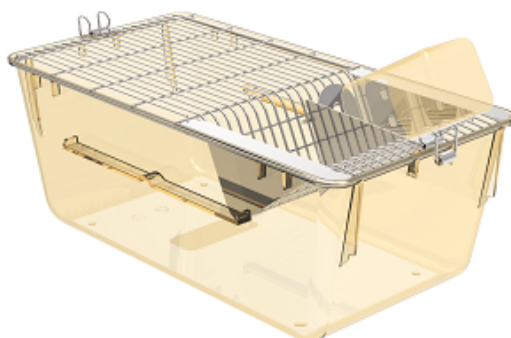
- Made of S.S. 304 material with duly spot welded and finished joints
- AISI 304 quality stainless steel material
- Provision for fixing water bottle
- Provision for Feed Pallets
- Fitted with two hooks of brass material for locking the grill to the top of the body of cage
- Fitted with tag holder
- Designed to ensure perfect fit and locking throughout the complete cage body
- Grill are designed such as to fit in second grill for ease of stacking with foldable
- Partition for food and water bottle compartment(Accessories Supplied: PC tray & SS Grill)

C. Polysulfone Mice Cage (EMUC-01):

Overall Size: 373x190x138 mm (L X B X H)

Floor Space: 500cm²

CE Certified



BODY

- Autoclavable at 121^o C temperature and pressure 15 LB/ Sq inch for 15 minutes
- Fully transparent body
- Food Grade quality material Polysulfone material
- Uniform thickness of 2.5mm±0.5mm
- Excellent stackability for ease of handling and storage

SS TOP GRILL

- Made of S.S. 304 material with duly spot welded and finished joints
- AISI 304 quality stainless steel material
- Provision for fixing water bottle
- Provision for Feed Pallets
- Fitted with two hooks of brass material for locking the grill to the top of the body of cage
- Fitted with tag holder
- Designed to ensure perfect fit and locking throughout the complete cage body
- Grill are designed such as to fit in second grill for ease of stacking with foldable
- Partition for food and water bottle compartment (Accessories Supplied: PSU tray & SS Grill)

SYSTEM SPECIFICATION:

Animal Weight in gram	Floor Space of Cage cm ²	Number of Mice per cage as per norms (CPCSEA)		
		EMC 01	EMHC 01	EMUC 01
<10	500	12	12	12
upto 15	500	9	9	9
upto 25	500	6	6	6
>25	500	5	5	5

ORDERING INFORMATION:

EU SERIES Model No	Suitable for animal	Overall Dimensions mm(L X B X H)	Components Included	MOQ
EMC 01	Mice	373 x 190 x 138	Polycarbonate Tray with S.S. grill	500
EMHC 01	Mice	373 x 190 x 138	High-Temperature Polycarbonate Tray with S.S. grill	500
EMUC 01	Mice	373 x 190 x 138	Polysulfone Tray with S.S. grill	100
WATER BOTTLE				
Model No	Suitable for Animal	Material & Capacity	Components Included	
SS-30C	Mice	Polycarbonate water bottle of 300ml	Polycarbonate water bottle of 300ml with silicon gasket and S.S. Press fit cap	
SS-30S	Mice	Polysulfone water bottle of 300ml	Polysulfone water bottle of 300ml with silicon gasket and S.S. Press fit cap	

*Autoclavable at 121°C temperature and pressure 15 LB/ Sq inch for 15 minutes.

RAT CAGE (EURO MODEL)

A. Polycarbonate Rat Cage: (ERC 01)

Overall Size: 412 x 267 x 196 mm (L X B X H)

Floor Space: 925 cm²

CE Certified



BODY

- Autoclavable at 121° C temperature and pressure 15 LB/ Sq inch for 15 minutes
- Fully transparent body
- Food Grade quality material Polycarbonate material
- Uniform thickness of 2.5mm±0.5mm
- Excellent stackability for ease of handling and storage

SS TOP GRILL

- Made of S.S. 304 material with duly spot-welded and finished joints
- AISI 304 quality stainless steel material
- Provision for fixing water bottle
- Provision for Feed Pallets
- Fitted with two hooks of brass material for locking the grill to the top of the body of cage
- Fitted with tag holder
- Designed to ensure perfect fit and locking throughout the complete cage body
- Grill are designed such as to fit in second grill for ease of stacking with foldable partition for food and water bottle compartment (Accessories Supplied: PC tray & SS Grill only)

B. Polycarbonate Rat Cage (Hi temp): (ERHC 01)

Overall Size: 412 x 267 x 196 mm (L X B X H)

Floor Space: 925 cm²

CE Certified



BODY

- Autoclavable at 121^o C temperature and pressure 15 LB/ Sq inch for 15 minutes
- Fully transparent body
- Food Grade quality material Polycarbonate material
- Uniform thickness of 2.5mm±0.5mm
- Excellent stackability for ease of handling and storage

SS TOP GRILL

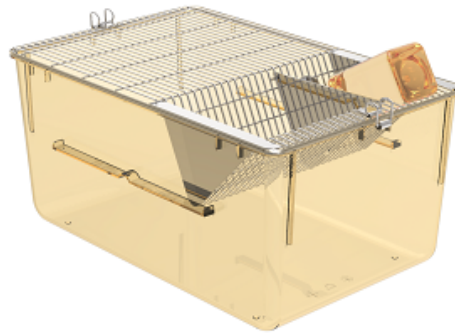
- Made of S.S. 304 material with duly spot welded and finished joints
- AISI 304 quality stainless steel material
- Provision for fixing water bottle
- Provision for Feed Pallets
- Fitted with two hooks of brass material for locking the grill to the top of the body of cage
- Fitted with tag holder
- Designed to ensure perfect fit and locking throughout the complete cage body
- Grill are designed such as to fit in second grill for ease of stacking with foldable partition for food and water bottle compartment (Accessories Supplied: PC tray & SS Grill only)

C. Polysulfone Rat Cage: (ERUC 01)

Overall Size: 412 x 267 x 196 mm (L X B X H)

Floor Space: 925 cm²

CE Certified



BODY

- Autoclavable at 121⁰ C temperature and pressure 15 LB/ Sq inch for 15 minutes
- Fully transparent body
- Food Grade quality material Polysulfone material
- Uniform thickness of 2.5mm±0.5mm
- Excellent stack ability for ease of handling and storage

SS TOP GRILL

- Made of S.S. 304 material with duly spot-welded and finished joints
- AISI 304 quality stainless steel material
- Provision for fixing water bottle
- Provision for Feed Pallets
- Fitted with two hooks of brass material for locking the grill to the top of the body of the cage
- Fitted with tag holder
- Designed to ensure perfect fit and locking throughout the complete cage body
- Grill is designed such as to fit in the second grill for ease of stacking with a foldable partition for food and water bottle compartment (Accessories Supplied: PSU tray & SS Grill)

SYSTEM SPECIFICATION:

Animal Weight in gram	Floor Space of Cage cm ²	Number of Mice per cage as per norms (CPCSEA)		
		ERC 01	ERHC 01	ERUC 01
<100	925	8	8	8
upto 200	925	6	6	6
Up to 300	925	4	4	4
Up to 400	925	3	3	3
Up to 500	925	2	2	2

ORDERING INFORMATION:

EU SERIES Model No	Suitable for animal	Overall Dimensions mm(L X B X H)	Components Included	MOQ
ERC 01	Rat	412 x 267 x 196	Polycarbonate Tray with S.S. grill	500
ERHC 01	Rat	412 x 267 x 196	High-Temperature Polycarbonate Tray with S.S. grill	500
ERUC 01	Rat	412 x 267 x 196	Polysulfone Tray with S.S. grill	100

WATER BOTTLE

Model No	Suitable for Animal	Material & Capacity	Components Included
SS 30C	Rat	Polycarbonate water bottle of 300ml	Polycarbonate water bottle of 300ml with silicon gasket and S.S. Press fit cap
SS 30S	Rat	Polysulfone water bottle of 300ml	Polysulfone water bottle of 300ml with silicon gasket and S.S. Press fit cap
SS 50C	Rat	Polycarbonate water bottle 500 ml	Polycarbonate water bottle of 500ml with silicon gasket and S.S. Press fit cap
SS 50 S	Rat	Polysulfone water bottle 500 ml	Polysulfone water bottle of 500ml with silicon gasket and S.S. Press fit cap

*Autoclavable at 121°C temperature and pressure 15 LB/ Sq inch for 15 minutes

TROLLEY FOR MICE & RAT CAGES (EURO SERIES)

1. Trolley / Rack suitable for holding EU Series Mice cages:

Suitable for holding EU Series Polycarbonate or Polysulfone Mice Cages of size 373x190x138 mm

Made of S.S. 304 material pipes mounted with common rails made of autoclavable technopolymers, fitted with 4" caster wheels out of which 2 are with break and 2 are without break.

ORDERING INFORMATION:

Model	Cage Capacity	Side	Configuration
R-EUM-S-36	36	Single	6 x 6
R-EUM-D-72	72	Double	6 x 6 x 2
R-EUM-S-48	48	Single	8 x 6
R-EUM-D-96	96	Double	8 x 6 x 2



2. Trolley / Rack suitable for holding EU Series Rat cages:

Suitable for holding EU Series Polycarbonate or Polysulfone Rat Cages of size 412 x 267 x 196 mm

Made of S.S. 304 material pipes mounted with common rails made of autoclavable technopolymers, fitted with 4" caster wheels out of which 2 are with break and 2 are without break.

ORDERING INFORMATION:

Model	Cage Capacity	Side	Configuration
R-EUR-S-30	30	Single	6 x 5
R-EUR-D-60	60	Double	6 x 5 x 2
R-EUR-S-36	36	Single	6 x 6
R-EUR-D-72	72	Double	6 x 6 x 2



Orchid Scientific & Innovative India Pvt. Ltd.

📍 B-59, M.I.D.C., Ambad, Nashik - 422010, India.

☎ +91253-2387600, 2972525

✉ office@orchidscientific.com, exports@orchidscientific.com

🌐 www.orchidscientific.com



www.orchidscientific.com